

# HSB-E12 sensor barriers

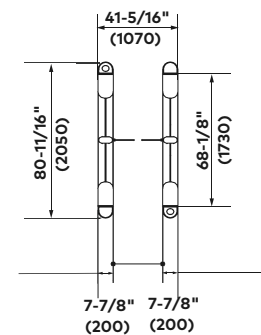
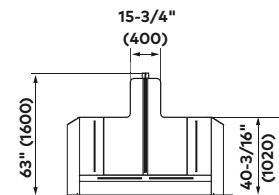
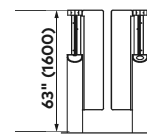
## Premium



**Premium** units offer tailgating monitoring. The enhanced sensor system includes luggage and child detection.

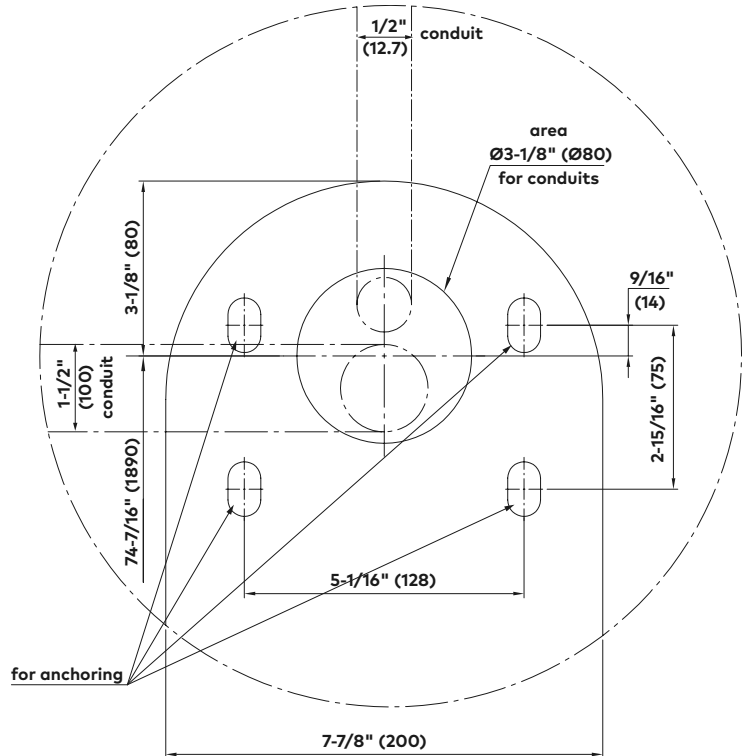
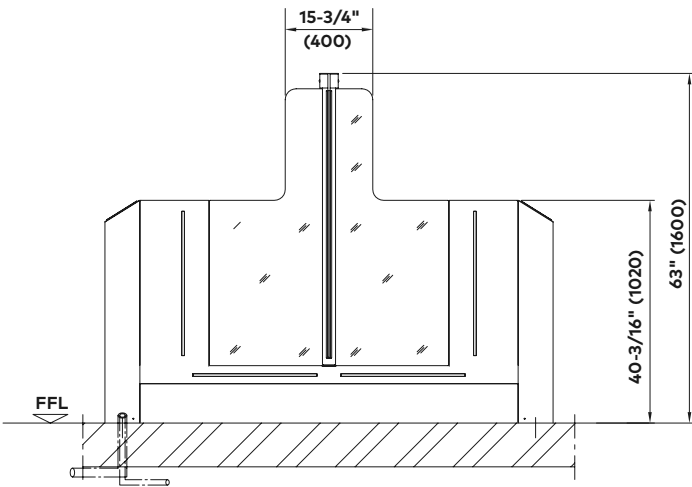
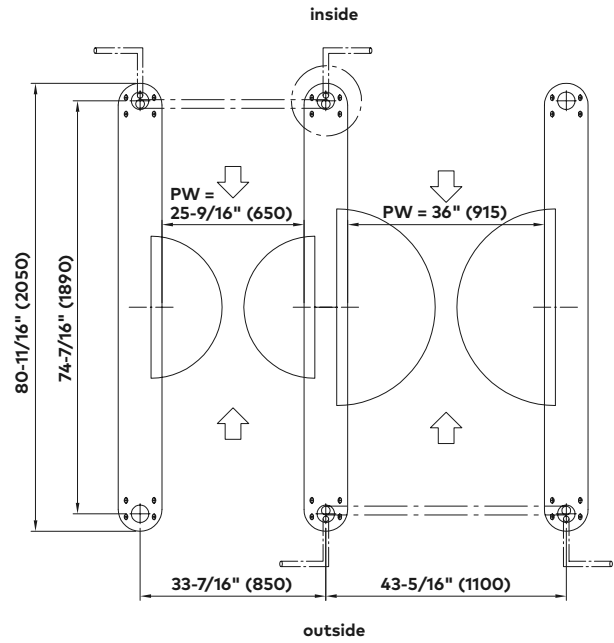
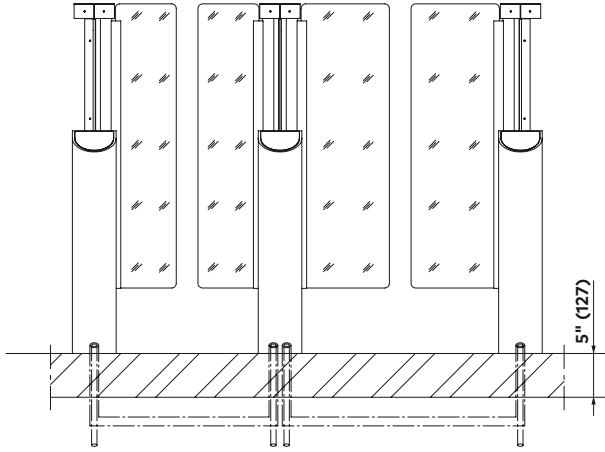
Standard units	HSB-E12
	<b>Note:</b> Description of single unit
Interlock height	63" (1600)
Interlock length	80-11/16" (2050)
Passage width	25-9/16" (650)
Total width	41-5/16" (1050)
Housing, base columns, guiding elements	AISI 304 stainless steel with satin finish.
ADA compliance	36" (915 mm) width available.
Barrier elements	Two door leaves made of transparent polycarbonate, upper edge 35-7/16" (900). Swinging area monitored by separation sensors.
Security	Passage area monitored by enhanced sensor system with an optimized installation length and arrangement (increased level of single passage monitoring in both directions). Integrated sneak-by guard, detection of children and luggage or rolling cases.
Finish	Stainless steel semi-gloss smooth finish.
Safety	Low energy drive with energy content less than 1.18 lb/ft.
Function	Type 2–power assisted motion; two servo-positioning drives/ electrically controlled in both directions.
Drives	Integrated in the swing tube.
Operating modes	Optical. Normally closed. Normally opened. (Barriers close on tailgate event.)
Electrical equipment	Control system and power supply integrated in the unit.
Power supply	110 – 230 VAC, 50/60 Hz. 368 VA
Standby power consumption	17 VA
Standard adjustment in case of power failure	Door leaves move freely.
Installation	Dowelled on finished floor level, FFL. Not suitable for outdoor installation.
Protection classes	Housing IP43, components conducting supply voltage IP43.

HSB-E12



# HSB-E12

## Installation drawings



**Note**  
Dimensions shown as inches followed by millimeters; for example, 1" (25).