

HSB-E08 sensor barriers

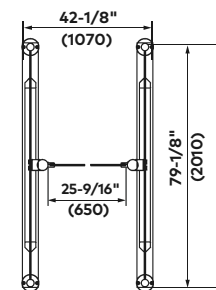
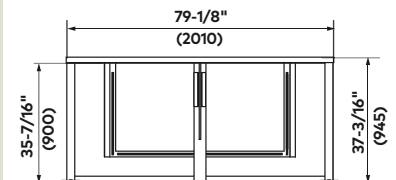
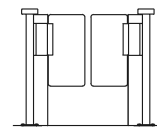
Premium



Premium units offer tailgating monitoring. The enhanced sensor system includes luggage and child detection.

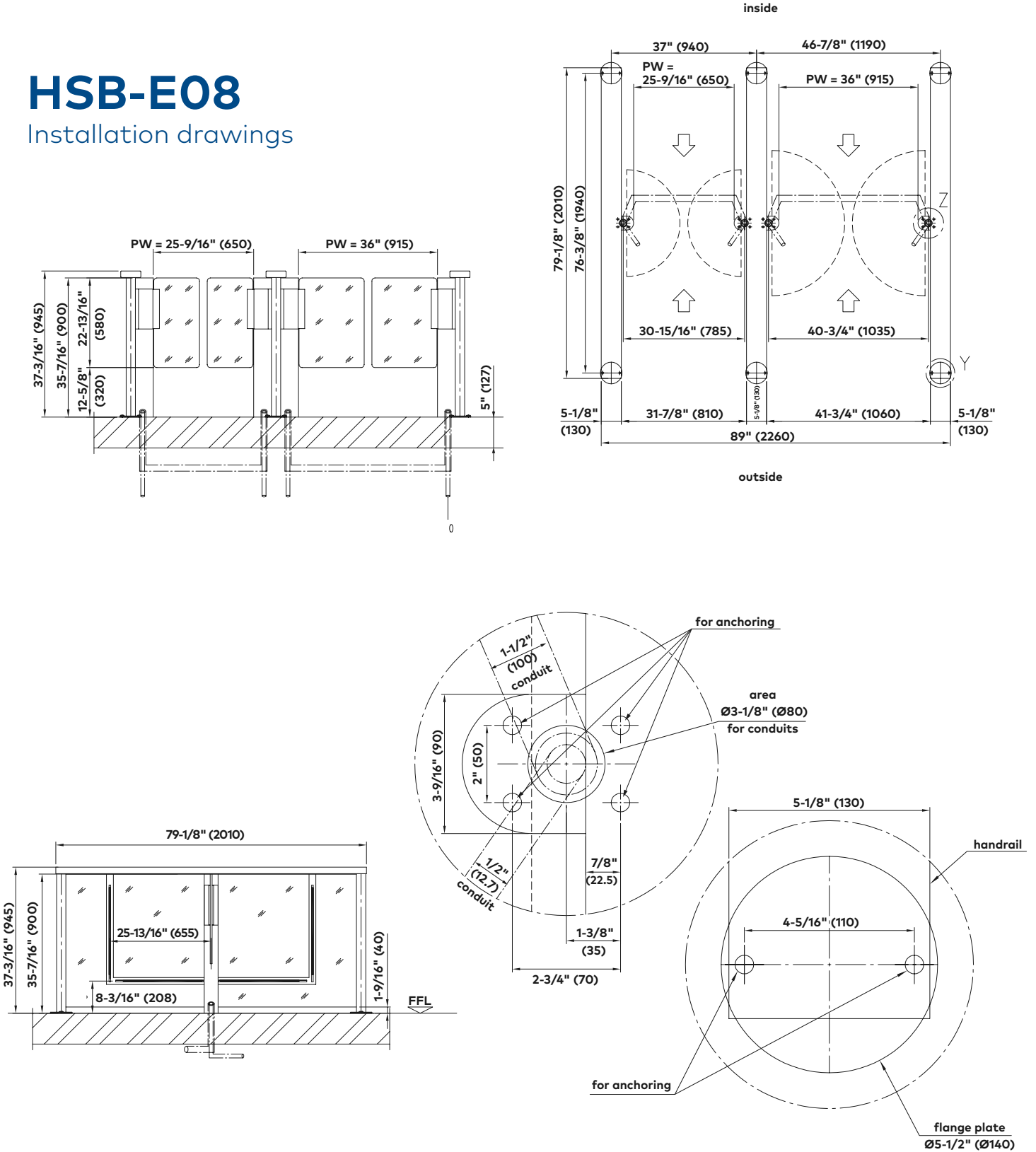
Standard units	HSB-E08
	Note: Description of single unit
Interlock height	37-3/16" (945)
Interlock length	79-1/8" (2010)
Passage width	25-9/16" (650)
Total width	42-1/8" (1070)
ADA compliance	36" (915) width available.
Housing, base columns, guiding elements	AISI 304 Ø2-3/8" (Ø60) stainless steel tube with 3/8" (10) toughened safety glass panel and AISI 304 stainless steel handrail as well as horizontal and vertical sensors mounted on the guiding elements.
Security	Passage area monitored by enhanced sensor system with an optimized installation length and arrangement (increased level of single passage monitoring in both directions). Integrated sneak-by guard, detection of children and luggage or rolling cases.
Barrier elements	Two door leaves made of transparent polycarbonate, upper edge 35 7/16" (900). Swinging area monitored by separation sensors.
Finish	Stainless steel semi-gloss smooth finish.
Safety	Low energy drive with energy content less than 1.18 lb/ft.
Function	Type 2 – power assisted motion; two servo-positioning drives/electrically controlled in both directions.
Drives	Integrated in the swing tube.
Operating modes	Optical. Normally closed. Normally opened. (Barriers close on tailgate event.)
Electrical equipment	Control system and power supply integrated in the unit.
Power supply	110 – 230 VAC, 50/60 Hz. 368 VA
Standby power consumption	17 VA
Standard adjustment in case of power failure	Door leaves move freely.
Installation	Dowelled on finished floor level, FFL. Not suitable for outdoor installation.
Protection classes	Housing IP32, components conducting supply voltage IP42.

HSB-E08



HSB-E08

Installation drawings



dormakaba USA Inc.
 Dorma Drive, Drawer AC
 Reamstown, PA 17567
 844.SPECNOW
 www.dormakaba.us

Note
 Dimensions shown as inches followed by millimeters; for example, 1" (25).