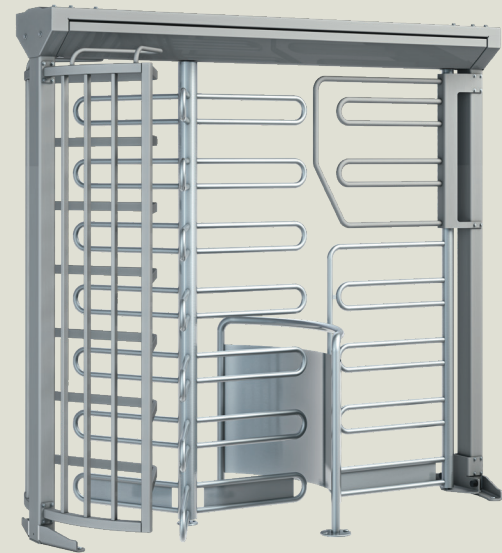


FTS-M02

Full height turnstile with bicycle gate



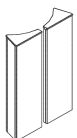
Standard units	FTS-M02
Construction column diameter	51-13/16" (1300 mm)
Portal width	92-1/8" (2340 mm)
Total height	89-3/8" (2270 mm)
with optional canopy D1	94-1/16" (2390 mm)
with optional canopy D2	95-1/4" (2420 mm)
with optional canopy D3	95-1/4" (2420 mm)
Passage height	81-1/8" (2060 mm)
Passage width	25-7/16" (646 mm)
Portal and housing	Steel
Lockable maintenance opening	Aluminum
Rotating unit with tubular column, Ø3-1/2" (Ø89 mm)	120° each with 7 U-shaped crossbars Ø1-1/16" (Ø27 mm), made of glossy AISI 304 stainless steel.
Barrier element	Curved with 7 horizontal steel bars.
Passage limitation	Half-height made of curved tubular AISI 304 stainless steel with plate panel.
Additional feature	Automatic bike door with three U-shaped crossbars Ø1-1/16" (Ø27 mm) and guard plate at bottom. Tube frame, guard plate and crossbars made of AISI 304 glossy stainless steel. Fixed barrier element above the bike door with two U-shaped crossbars Ø1-1/16" (Ø27 mm) and tube frame made of steel.
Finish	Rotating unit made of glossy stainless steel, hot-dip galvanized steel elements, aluminum elements in RAL 9006 (white aluminum).
Rotor	3-blade rotor
Function (see Function note)	Power assist. Automatic bicycle door with two induction loops and loop detector, electronically controlled in two directions.
Electrical equipment	Control system integrated in the unit.
Power supply	100 – 240 VAC, 50/60 Hz, 506 VA.
Standby power consumption	10 VA.
Installation	Finish floor Sub-floor Sleeve foundation
Protection classes	Housing IP33, components conducting supply voltage IP43.

Function

Power assist—Power-assisted motion; servo-positioning drive/electronically controlled in both directions (behavior in event of power failure can be selected for each direction: free or blocked).

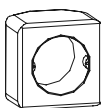
Optional components

Housing



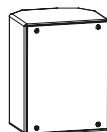
Housing with lockable front panel made of silver anodized aluminum, plastic-coated according to RAL or glossy stainless steel

Console 1



Plastic in color of unit or in RAL 9006
W: 3-11/16" (94 mm)
H: 3-11/16" (94 mm)
D: 2-9/16" (65 mm)

Console 2



Aluminum in color of unit or in RAL 9006
W: 5-1/2" (140 mm)
H: 7-1/16" (180 mm)
D: 4-5/16" (110 mm)

Console 3



Aluminum in color of unit or in RAL 9006
W: 5-1/2" (140 mm)
H: 14-3/8" (365 mm)
D: 4-5/16" (110 mm)

Subject to change without notice



Entrance systems

FTS-M02

Installation drawings

