



# Argus optical swing lane



## The shape of perfect function.

Argus optical swing lanes define a new elegance—a closed shape for fluid movement. The modules are clearly designed with straight lines and radial corners. Thus, two slim structures form one symmetrical unit—seamlessly integrating technology, user-friendliness, and a weightless symmetry to articulate intelligent interior design and smart access control.



TRIM



# Experience freedom.

The Argus Optical Swing Lane opens the way to freedom in form, finish, and function. Here, coordinated metal surfaces and glass synthesize to accentuate foyer aesthetics, extending protection without restriction.

## Argus 40

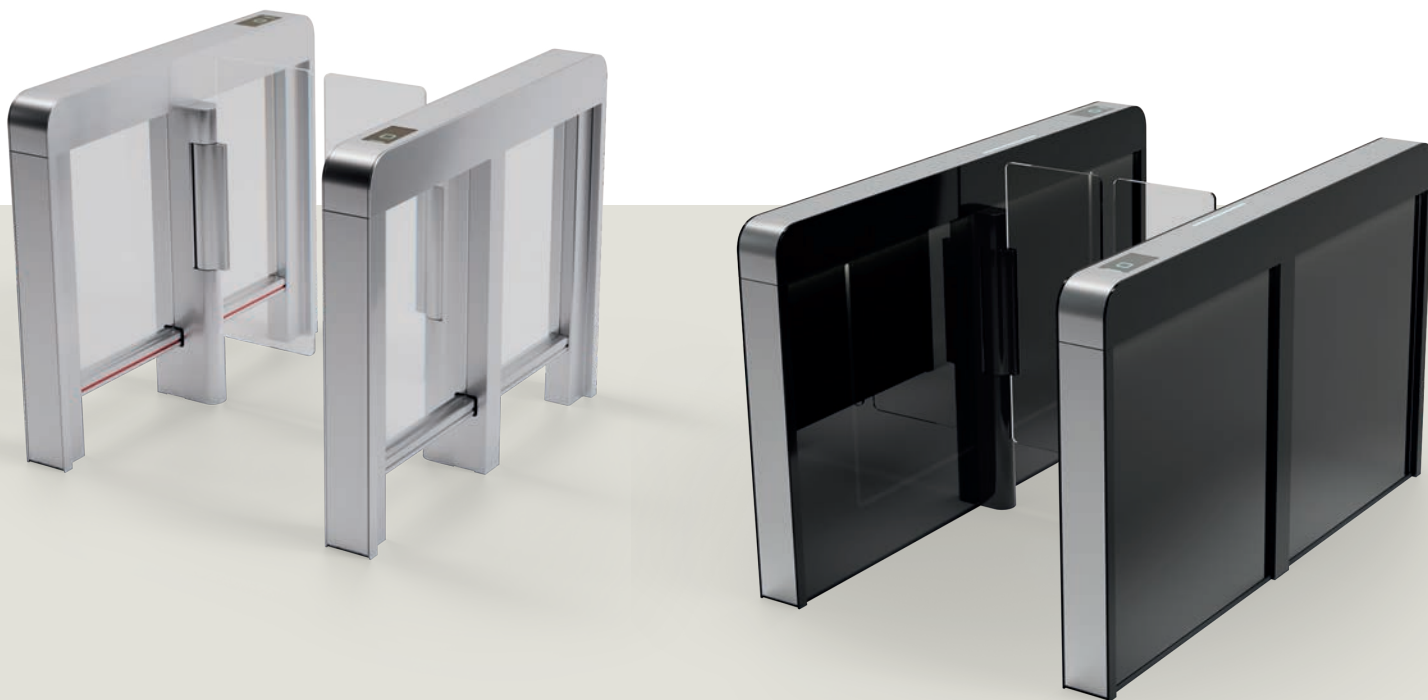
Compact, complete, flexible

Argus 40 is our compact model suitable for limited space installation. Though shorter in length than the 60 and 80, this lane still offers full functionality to meet safety requirements without compromise.

## Argus 60

Increased safety level, more options

The longer length of the Argus 60 offers an increased safety level with a vertical sensor strip to supplement the horizontal scanner. Optional full height door leaves provide additional security. An easy-to-understand user guidance system ensures a high level of convenience with optional intuitive cueing lights in the top cover and an illuminated icon in the scanner to indicate action. Ambient lighting is integrated for aesthetics—the unit becomes a real highlight in the foyer.



Modularity facilitates fluid movement, combining openness with security and making Argus the optical swing lane that overcomes all barriers.



With Argus 80, the panels and even the door leaves can be modified to any matching color—transparent or opaque—with a striking corporate logo or color ambient lighting. The perfect look for your entrance area.

# Argus 80

Solid, elegant design

Argus 80 offers a high-quality, solid, and elegant design that provides security in all directions and in all situations. The one-piece Full Cast Layer design of the frame sections projects a refined look with the appearance of an endless hand rail. As with the Argus 60, the equipment is variable—different security modules, color combinations and door heights, as well as intuitive cueing lights and ambience lighting are available. Customizing is also possible: the side panels can shine in corporate colors.



## Argus components

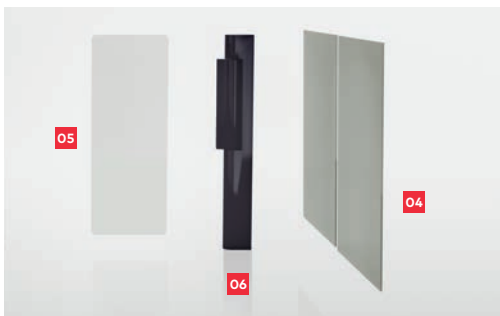
01 The **Profile** ensures the stability of the entire system and supports the components.

02 The **Inlay** covers the technology and shapes the interlock as a closed object.



03 The **Full Cast Layer** (Argus 80) conceals the profile to produce a seamless design.

04 The **Panels** close off the frame body flush and set optional color accents.



05 The **Door Leaves** convey security and transparent openness at the same time.

06 The **Drive Unit** is integrated as a slim column in the overall system.

## #moveforward

The world is diverse. And people are, too. Argus has a variable design intended to function for those with restricted movement such as Tobias Roll.

He never has allowed himself to be constrained by his wheelchair. As an employee of dormakaba, he contributes his practical knowledge and is committed to 100% accessibility for our diverse world.

#moveforward



TRIM



The subtly concealed **Scanner** defines the action area with nothing more than an illuminated icon. The prevalent RFID scanner formats can be fitted easily.

The **Sensors** in the Argus 40 are positioned efficiently in the leg area. With Argus 60 and 80, an additional, vertical sensor strip is installed, which achieves better recognition of subsequent, unauthorized people and also detects entry from the wrong direction.



We make access in life smart and secure.

Visit [dormakaba.us](http://dormakaba.us)



dormakaba USA Inc.  
Dorma Drive, Drawer AC  
Reamstown, PA 17567  
844.SPECNOW  
[www.dormakaba.us](http://www.dormakaba.us)